

PTL MOTO

Platform Brake Tester

The PTLm is a platform brake tester specially designed for motorcycles. The so called PTLm is a dynamic brake tester to measure the brake force of the front and rear brake of a motorcycle in real time. The PTLm is designed and produced with solid platforms, equipped with a special coating to reach the highest friction coefficient, even with wet tyres.



This brake platform is extremely user friendly and nearly free of any required service. The unique sliding construction with polyamide rollers will last for a long time.

The Platform Brake Tester for motorcycles is equipped with a weighing scale, which gives the operator the opportunity to correlate the brake force to the weight of the motor cycle. This will result the brake efficiency value. The measured values will be presented on a digital display. Both brake forces of both the front and rear wheel will be presented. The display is equipped with the latest technology, realizing fast and a high accuracy of the measured values!

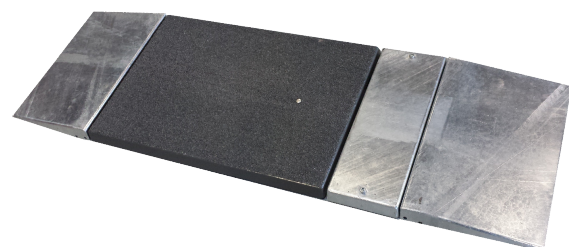
Installing the PTLm is easy and can be done by one technician. A smooth and flat workshop floor will increase the speed of installing the unit. The distance between the platform and the display unit can be chosen by the customer, as the cables have a length of 20 meter.

Specifications

Dimensions display:	55x30x7cm
Max. bike weight:	500kg
Dimension brake plate:	80x55cm
Dimension Weight plate:	20x55cm
Total dimensions:	172x55x4,6cm
Test speed:	5-10km/h
Height weight/brake plate:	46mm
Measuring range brake force:	0 - 10.000 N
Power supply:	90-250Vac-40-50Hz
Cover brake plate:	Epoxy grid.



Display Unit



Platform